

**LEGEND:**

EXISTING TREES:

EXISTING TREES TO REMAIN - PROTECT IN PLACE

PARK SHADE TREES:

LIQUIDAMBAR STYRACIFLUA    AMERICAN SWEETGUM  
 PLATANUS SPECIES    SYCAMORE (VARIOUS)

DECIDUOUS OAK TREES

QUERCUS PALUSTRIS  
 QUERCUS RUBRA  
 QUERCUS SHUMARDII

SEMI-EVERGREEN OAK TREES

QUERCUS LOBATA  
 QUERCUS MULHENBERGII

EVERGREEN OAK TREES

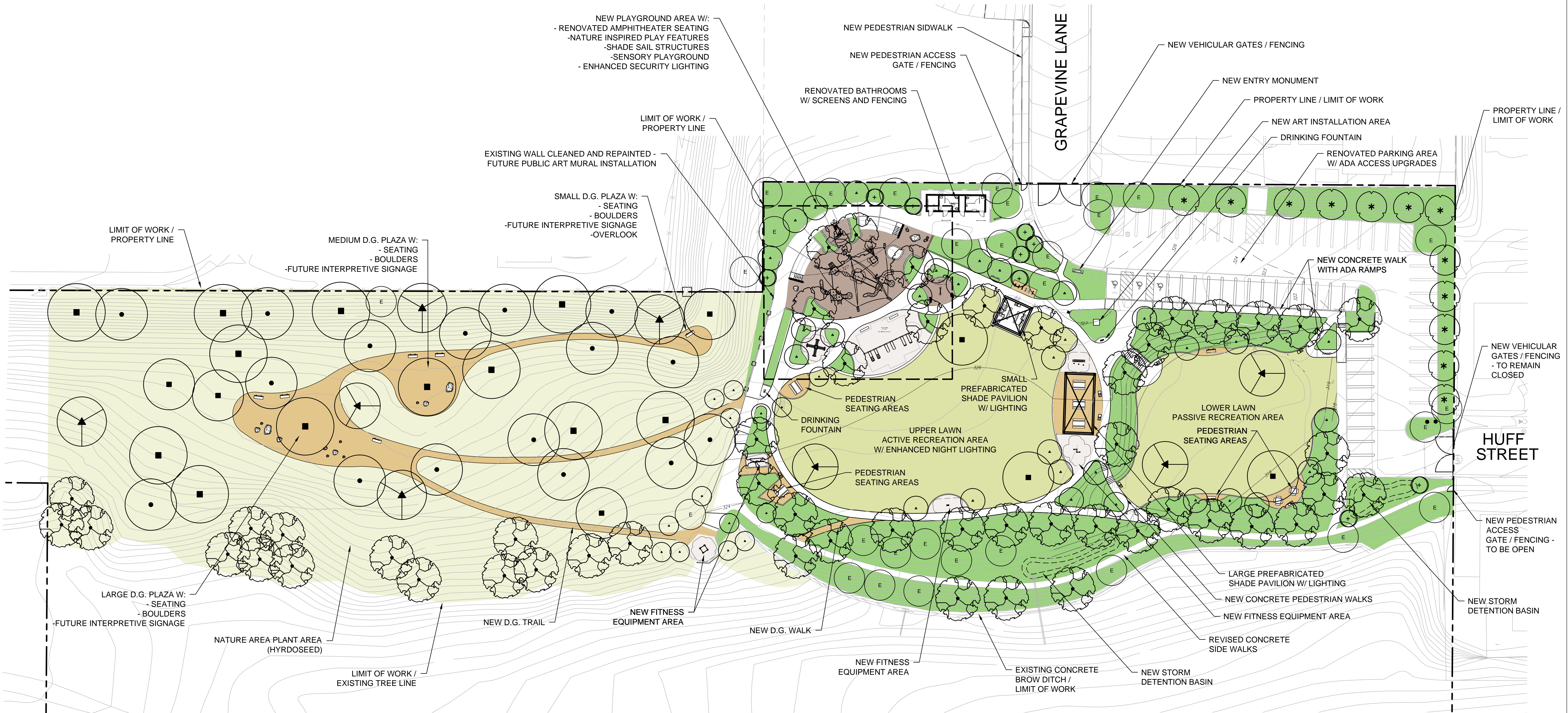
QUERCUS VIRGINIANA  
 QUERCUS AGRIFOLIA  
 QUERCUS ENGELMANNII  
 QUERCUS SUBER

ACCENT TREES SUCH AS:

CERCIS OCCIDENTALS    WESTERN REDBUD  
 CERCIS CANADENSIS - 'FOREST PANSEY'  
 FOREST PANSEY REDBUD

GROUNDCOVER / HARDSCAPE

TURF / ACTIVE & PASSIVE RECREATION  
 SHRUB / GROUNDCOVER PLANTING AREA  
 NATURAL AREA WITH D.G. TRAIL AND SEATING  
 STABILIZED DECOMPOSED GRANITE PAVING  
 PLAYGROUND FALL SURFACING - FIBAR / RUBBERIZED RESILIENT SURFACING  
 FIBAR / RUBBERIZED RESILIENT SURFACING



\*OVERHEAD OBSTRUCTIONS WITHIN USE ZONES OF PLAYGROUND EQUIPMENT THAT ARE NOT PART OF THE PLAY STRUCTURE (FOR EXAMPLE, TREE LIMBS) SHALL BE AT LEAST 84 IN. (2130mm) ABOVE EACH DESIGNATED PLAY SURFACE OR 84 IN. (2130mm) ABOVE THE PIVOT POINT OF SWINGS.

CUSTOM SHADE SAILS (3 TOTAL) BY DAVE BANG AND ASSOCIATES

EXISTING AMPHITHEATER SEATING W/ HANDRAIL

NEW AMPHITHEATER STAIRS W/ HANDRAIL

NEW BOULDER IN SLOPE

NEW RUBBERIZED PLAY SURFACING

NEW BOULDER IN SLOPE

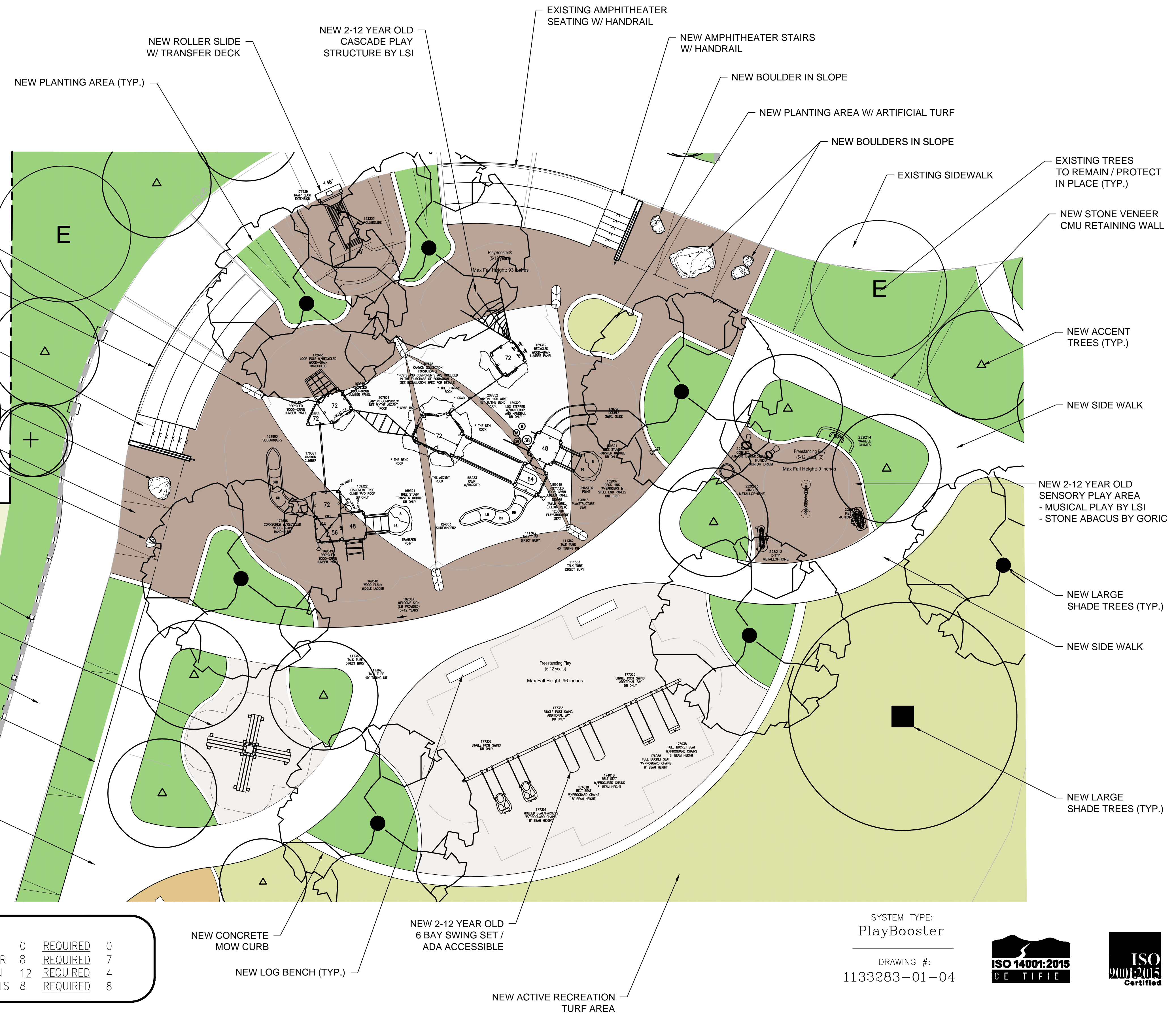
EXISTING WALL CLEANED AND REPAINTED - FUTURE PUBLIC ART MURAL INSTALLATION

NEW FITNESS EQUIPMENT STATION / OPTIONAL PLAYGROUND EXPANSION AREA

EXISTING SIDEWALK - PROTECT IN PLACE

NEW STONE VENEER CMU RETAINING WALL

NEW CONCRETE SIDE WALK



TOTAL ELEVATED PLAY COMPONENTS	13		
TOTAL ELEVATED COMPONENTS ACCESSIBLE BY RAMP	0	REQUIRED	0
TOTAL ELEVATED COMPONENTS ACCESSIBLE BY TRANSFER	8	REQUIRED	7
TOTAL ACCESSIBLE GROUND LEVEL COMPONENTS SHOWN	12	REQUIRED	4
TOTAL DIFFERENT TYPES OF GROUND LEVEL COMPONENTS	8	REQUIRED	8

SYSTEM TYPE:  
PlayBooster

DRAWING #:  
1133283-01-04



**landscape structures**

**IPEMA CERTIFIED**

The play components identified on this plan are IPEMA certified. (Unless model number is preceded with \*) The use and layout of these components conform to the requirements of ASTM F1487. To verify product certification, visit [www.ipema.org](http://www.ipema.org)

THIS PLAY AREA & PLAY EQUIPMENT IS DESIGNED FOR AGES 5-12 YEARS UNLESS OTHERWISE NOTED ON PLAN.

IT IS THE MANUFACTURERS OPINION THAT THIS PLAY AREA DOES CONFORM TO THE A.D.A. ACCESSIBILITY STANDARDS. ASSUMING AN ACCESSIBLE PROTECTIVE SURFACING IS PROVIDED, AS INDICATED, OR WITHIN THE ENTIRE USE ZONE.

THIS CONCEPTUAL PLAN WAS BASED ON INFORMATION AVAILABLE TO US. PRIOR TO CONSTRUCTION, DETAILED SITE INFORMATION INCLUDING SITE DIMENSIONS, TOPOGRAPHY, EXISTING UTILITIES, SOIL CONDITIONS, AND DRAINAGE SOLUTIONS SHOULD BE OBTAINED, EVALUATED, & UTILIZED IN THE FINAL DESIGN. PLEASE VERIFY ALL DIMENSIONS OF PLAY AREA, SIZE, ORIENTATION, AND LOCATION OF ALL EXISTING UTILITIES, EQUIPMENT, AND SITE FURNISHINGS PRIOR TO ORDERING. SLIDES SHOULD NOT FACE THE HOT AFTERNOON SUN.

CHOOSE A PROTECTIVE SURFACING MATERIAL THAT HAS A CRITICAL HEIGHT VALUE TO MEET THE MAXIMUM FALL HEIGHT FOR THE EQUIPMENT (REF. ASTM F1487 STANDARD CONSUMER SAFETY PERFORMANCE SPECIFICATION FOR PLAYGROUND EQUIPMENT FOR PUBLIC USE, SECTION 8 CURRENT REVISION). THE SUBSURFACE MUST BE WELL DRAINED. IF THE SOIL DOES NOT DRAIN NATURALLY IT MUST BE TILED OR SLOPED 1/8" TO 1/4" PER FOOT TO A STORM SEWER OR A "FRENCH DRAIN".

ACCESSIBLE/PROTECTIVE SURFACING TO BE A COMBINATION OF UNITARY AND LOOSE FILL MATERIALS.

Coast Recreation, Inc.  
Mike Eisert

DESIGNED BY:  
MJO

COPYRIGHT: 3/18/2019  
LANDSCAPE STRUCTURES, INC.  
601 7th STREET SOUTH - P.O. BOX 198  
BELAND, MINNESOTA 55328  
PH: 1-800-328-0035 FAX: 1-763-972-6091

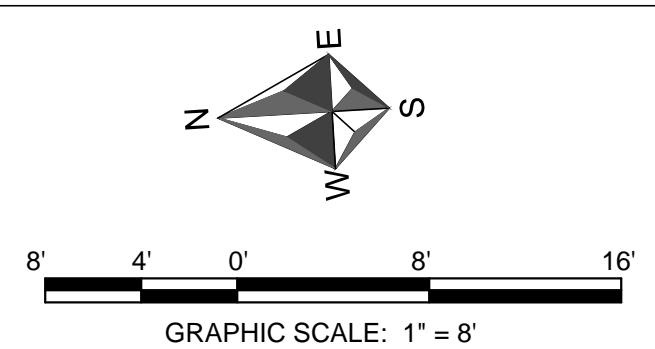
2/6/19	1133283-01-03	MJO
1/29/19	1133283-01-02	MJO
1/4/19	1133283-01-01	MJO
Date	Previous Drawing #	Initials



MARCH -18 -2019

# BUB WILLIAMSON PARK

## SIXTY PERCENT CDs - ILLUSTRATIVE PLAYGROUND PLAN



**ASR**  
LANDSCAPE ARCHITECTURE

5605 LAURETTA STREET  
SAN DIEGO, CA 92110  
619.992.8196  
WWW.ASRLA.COM