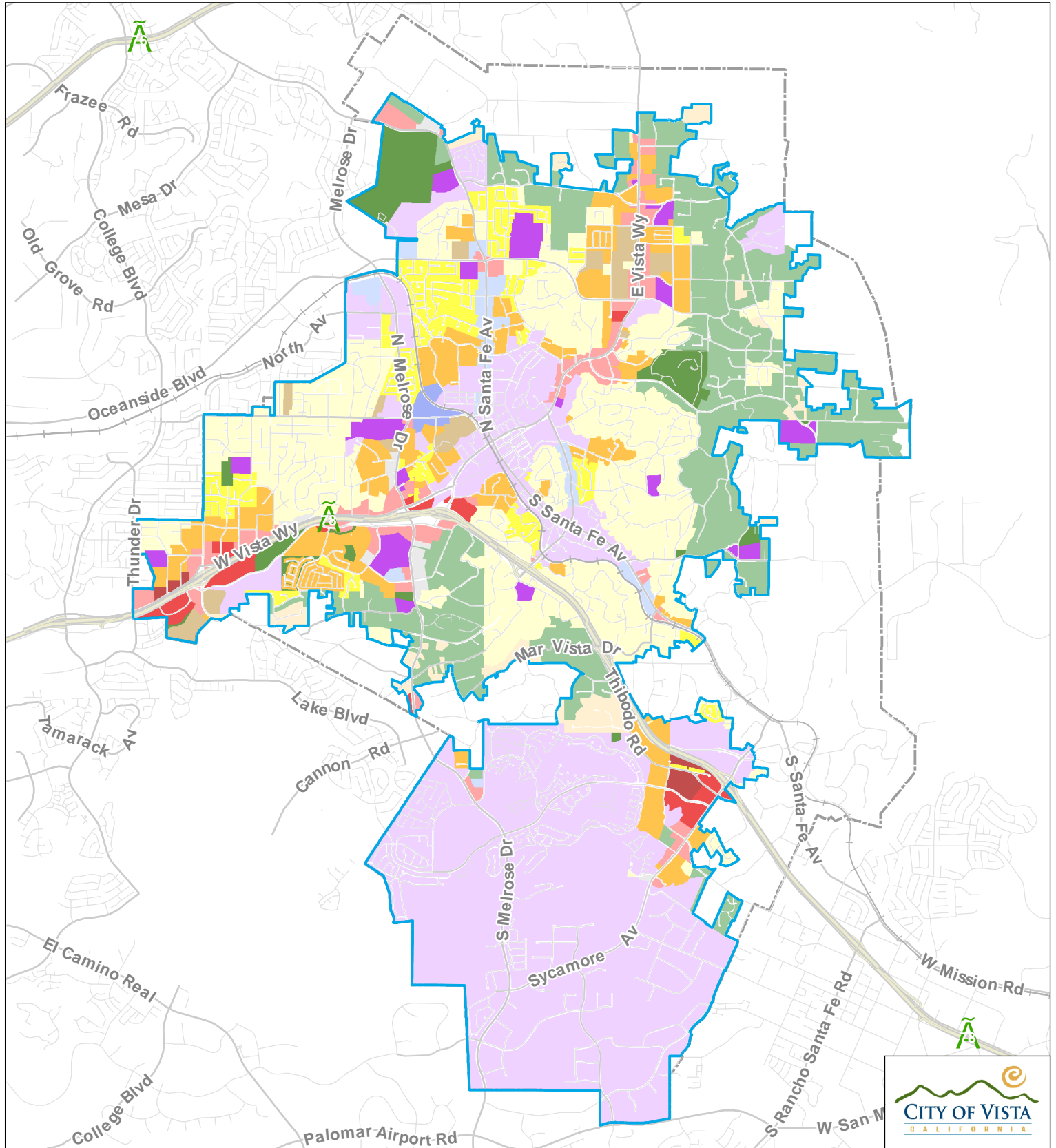


# City of Vista Zoning Map



- |                     |                           |                           |                                   |
|---------------------|---------------------------|---------------------------|-----------------------------------|
| City Limits         | C-2 (Commercial)          | M-1 (Light Manufacturing) | O-P (Office Professional)         |
| Sphere of Influence | C-3 (Commercial)          | M-U (Mixed Use)           | R-1 (Single-Family Residential)   |
| A-1 (Agricultural)  | C-A (Civic Activity)      | MHP (Mobile Home Park)    | R-1-B (Single-Family Residential) |
| C-1 (Commercial)    | E-1 (Estates Residential) | O (Open Space)            | R-M (Multi-Family Residential)    |
|                     |                           |                           | SPI (Specific Plan)               |



Disclaimer: This product is for informational purposes and may not have been prepared for, or be suitable for legal, engineering, or surveying purposes. Users of this information should review or consult the primary data and information sources to ascertain the usability of the information.



Rev 7/11/2018